

HOLIDAY SELECTION 2025



GALERIE LÉAGE

18th-century furniture and objets d'art

Holiday Selection

I



SUITE OF THREE DECORATIVE PAINTED SILK PANELS

China, late 18th century
Painting on mounted silk
Pigments

Provenance :

Collection d'Erika et Robert M. Brunson

Large panel:

H: 248 cm – 97 1/2 inches • W: 100 cm – 39 1/2 inches • D: 7 cm – 2 3/4 inches

Small panels:

H: 248 cm – 97 1/2 inches • W: 70 cm – 27 1/2 inches • D: 7 cm – 2 3/4 inches

65.000 euros

Holiday Selection

I





II



LYRE-SHAPED CARTEL CLOCK ADORNED WITH A
MASK AND RAM'S HEADS

France, Régence period, circa 1730

Dial signed *Jean-Baptiste Baillon*

After a model attributed to **André-Charles Boulle (1642-1732)**

Clockwork by **Jean-Baptiste Baillon (Master in 1727)**

Chased and gilt bronze

Provenance : Former collection of Jacques Perrin, Paris.

H: 66 cm – 26 inches ♦ W: 24 cm – 9 1/2 inches ♦ D: 10 cm – 4 inches

145.000 euros

Holiday Selection

II





GALERIE LÉAGE
18th-century furniture and objets d'art

III



PAIR OF COMPIGNÉ PAINTINGS DEPICTING A
VIEW OF THE SURROUNDINGS OF UTRECHT
AND A VIEW OF THE YPRES CANAL AT FURNES

France, second half of the 18th century

Attributed to **Thomas Compigné**

Pewter, gold, gouache

H: 19 cm – 7 1/2 inches ♦ W: 23 cm – 9 1/8 inches

35.000 euros

Holiday Selection

III



Holiday Selection

III



Holiday Selection

III



IV



PAIR OF FIREDOGS WITH RECLINING LIONS

France, Régence period
Chased and gilt bronze

H: 22 cm – 8 3/4 inches • W: 15,5 cm – 6 inches • D: 10 cm – 4 inches

45.000 euros

IV





V



CIRCULAR MIRROR SURMOUNTED BY A
MASCARON

Possibly Austrian, late 18th – early 19th century
Chased, gilt and silvered bronze

H: 23 cm – 9 inches • D: 19 cm – 6 inches

65.000 euros



Holiday Selection

V



VI



PAIR OF GREYHOUND PAPERWEIGHTS

France, Louis XVI period, circa 1775-1780

Chased, patinated, and gilt bronze

H: 11,5 cm - 4 1/2 inches • W: 19 cm – 7 1/2 inches • D: 9,5 cm – 4 inches

25.000 euros



Holiday Selection

VI



GALERIE LÉAGE
18th-century furniture and objets d'art

VII



PAIR OF PIETRA DURA PLAQUES

Italy, Florence, first half of the 17th century

Attributed to the **Galleria dei Lavori in Pietra Dura**

Hardstone inlays (including lapis lazuli, agate, and jasper), black and yellow marble

Chased and gilt bronze frames

H: 20.5 cm – 8 inches ♦ W: 16.5 cm – 6 1/2 inches

38.000 euros

VII





VIII



PAIR OF TWO-BRANCH WALL LIGHTS
DECORATED WITH MASKS

France, Louis XV period, circa 1765
Chased and gilt bronze

H: 27 cm – 10 1/2 inches • W: 25 cm – 9 3/4 inches

65.000 euros

Holiday Selection

VIII



GALERIE LÉAGE
18th-century furniture and objets d'art

Holiday Selection

VIII



GALERIE LÉAGE
18th-century furniture and objets d'art

IX



MAHOGANY BURL PLANTER

France, Louis XVI period

Attributed to **Joseph Gengenbach, called Canabas (1712-1797)**

Mahogany burl

H: 51 cm - 20 inches • W: 32 cm – 12 1/2 inches • D: 32 cm – 12 1/2 inches

28.000 euros

Holiday Selection

IX



GALERIE LÉAGE
18th-century furniture and objets d'art

Holiday Selection

IX



GALERIE LÉAGE
18th-century furniture and objets d'art

X



MEDALLION IN COMPIGNÉ PAINTING
REPRESENTING A VILLAGE SCENE

France, second half of the 18th century

Attributed to **Thomas Compigné**

Pewter, gouache and gold

D: 17,5 cm – 6 5/8 inches

9.500 euros

Holiday Selection

X





XI



CANDLEHOLDER IN POLISHED STEEL ENHANCED
WITH BRASS AND PEWTER

Russia, late 18th century – early 19th century

Tula Manufactory

Steel, enhanced with brass and pewter application

H: 6,5 cm – 2 1/2 inches • W: 10 cm – 4 inches • D: 9,3 cm – 3 1/2 inches

8.500 euros

Holiday Selection

XI



GALERIE LÉAGE
18th-century furniture and objets d'art

Holiday Selection

XI



GALERIE LÉAGE
18th-century furniture and objets d'art

XII



PAIR OF TRIPOD ETRUSCAN CANDLESTICK

France, late 18th century
Chased, patinated and gilt bronze

H: 25,2 cm – 9 3/4 inches • D: 10,5 cm – 4 inches

12.500 euros

Holiday Selection

XII



GALERIE LÉAGE
18th-century furniture and objets d'art

Holiday Selection

XII



XIII



COMPIGNÉ PAINTING REPRESENTING A VIEW OF
ROME'S SURROUNDINGS

France, second half of the 18th century

Thomas Compigné

Tortoiseshell and gold

D: 9,5 cm – 3 ¾ inches

5.000 euros

Holiday Selection

XIII



GALERIE LÉAGE
18th-century furniture and objets d'art



XIV



PAIR OF SMALL *VERRE ÉGLOMISÉ* PLATES

France, 18th century

Gold, silver, and red pigments, on verre églomisé plates

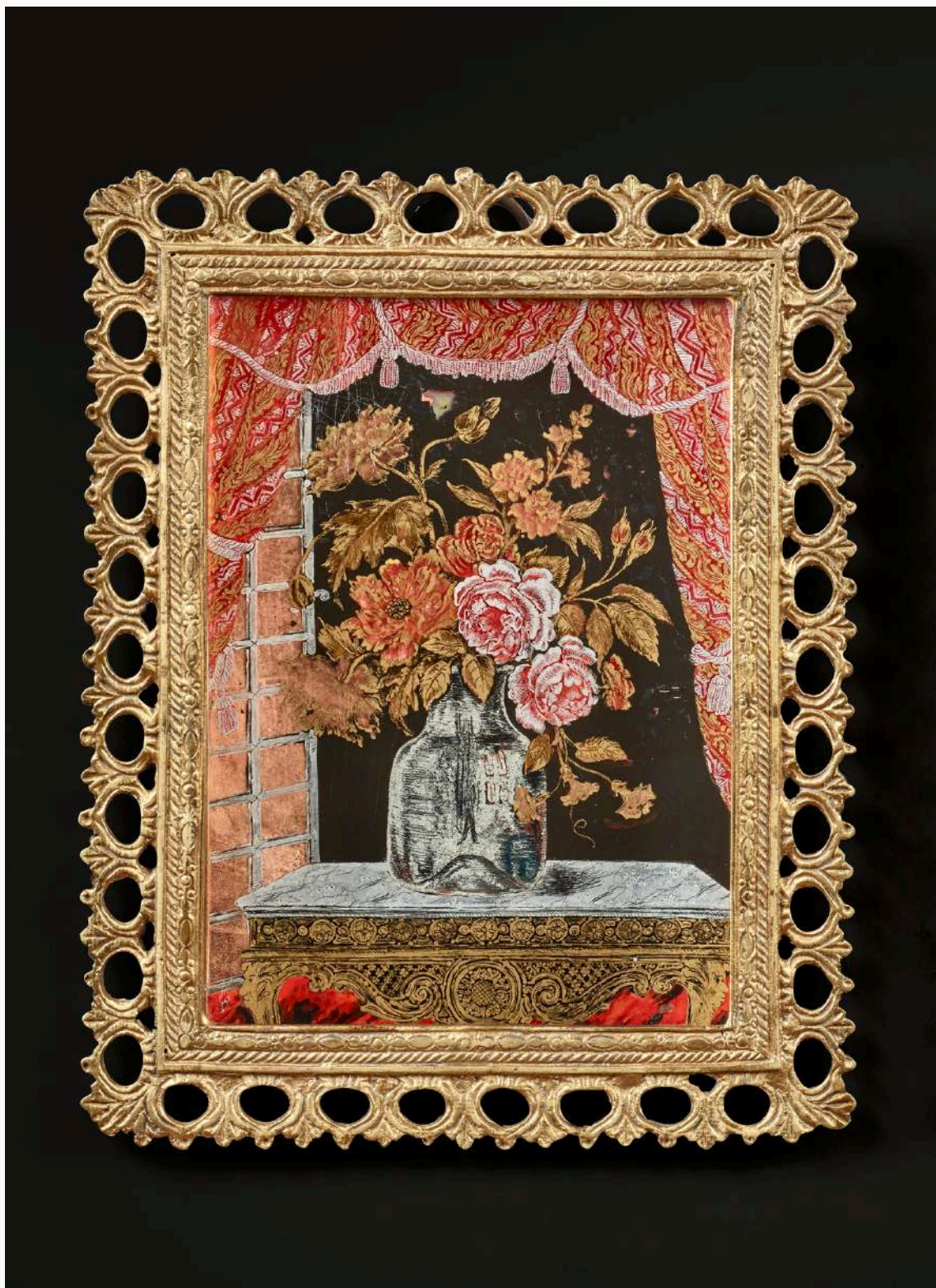
Gilt, chased, and openwork metal

H: 18 cm – 7 inches • W: 14,5 cm – 5 ¾ inches

15.000 euros

Holiday Selection

XIV



GALERIE LÉAGE
18th-century furniture and objets d'art

XIV





XV



PAIR OF SCAGLIOLA TABLE TOPS

Carpi, Emilia-Romagna (Italy), mid-17th century

Scagliola

Gilt metal base added in the 20th century

H: 65,5 cm - 25 3/4 inches • W: 131,5 cm - 51 3/4 inches • D: 3 cm - 1 1/8 inches

70.000 euros



Holiday Selection

XV



GALERIE LÉAGE
18th-century furniture and objets d'art



XVI



PAINTING IN COMPIGNÉ DEPICTING THE PORT
OF BORDEAUX VIEWED FROM THE QUAI DES
FARINES

France, last third of the 18th century

Attributed to **Thomas Compigné**

Pewter, gold, gouache

H: 11,5 cm – 4 1/2 inches • W: 11,5 cm – 4 1/2 inches

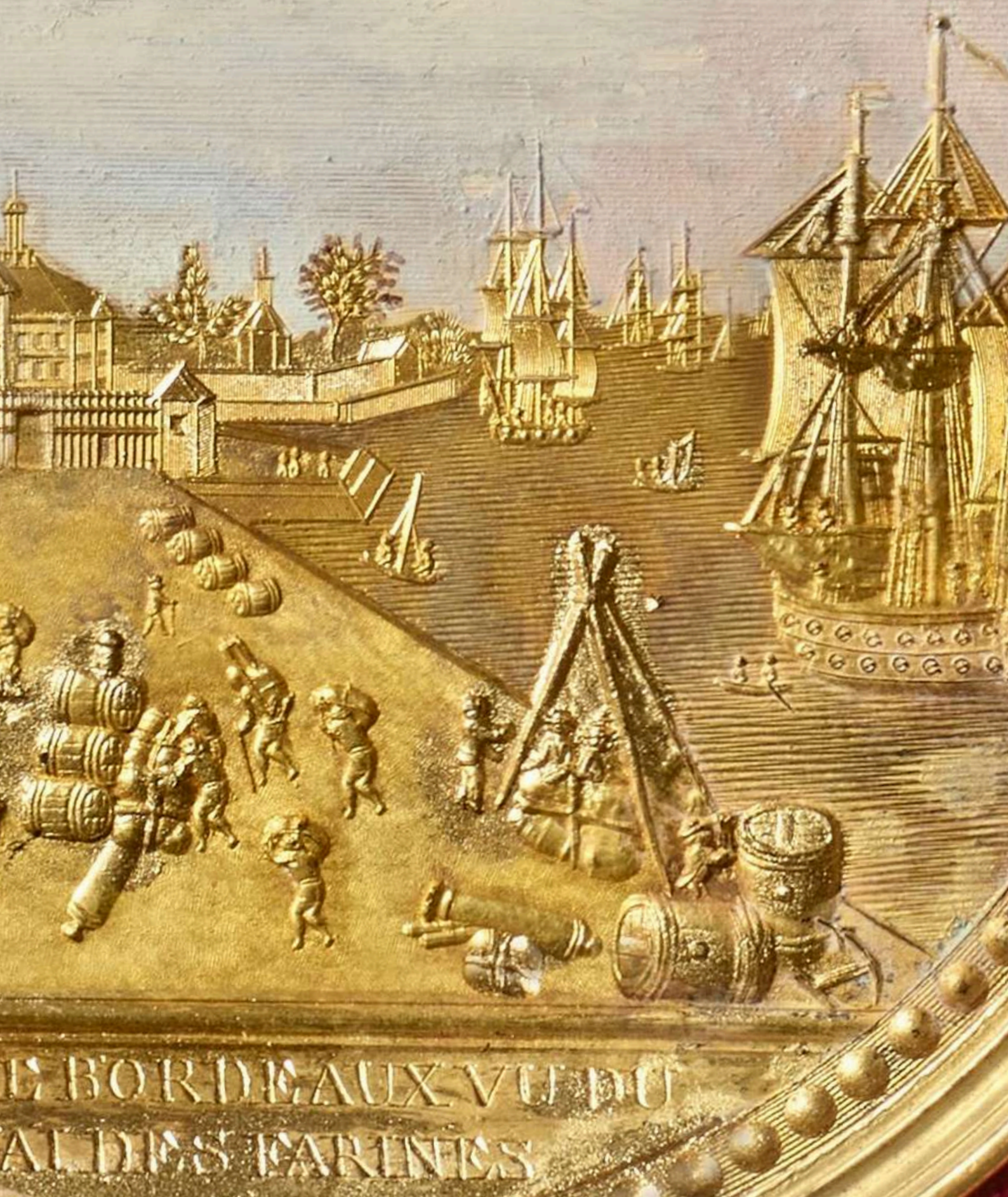
9.000 euros

Holiday Selection

XVI



GALERIE LÉAGE
18th-century furniture and objets d'art



LE BORDAUX VU DU
AL DES FARENTES

XVII



VERRE ÉGLOMISÉ PLATE REPRESENTING SAN MARCO
BASIN WITH THE PIAZZETTA AND THE DOGE'S PALACE

France, mid-18th century

Marked at the top: *VEÛE DE LA PLACE SAINT-MARC*

Gold and silver on *verre églomisé*

Based on:

Pierre Chenu after Caspar Van Wittel, *View of St Mark's Square in Venice, seen from the harbour with gondolas in foreground*, circa 1750, published by Jacques Philippe Le Bas, London, The British Museum (inv. 1951,0714.323)

H: 38,5 cm – 15 inches ♦ W: 52,5 cm – 20 1/2 inches

60.000 euros

Holiday Selection

XVII



GALERIE LÉAGE
18th-century furniture and objets d'art

PLACE ST MARC



XVIII



RECTANGULAR MIRROR DECORATED WITH
GLASS AND GILT BRONZE

Northern Italy, probably Venice, circa 1700

Wood covered with silver leaves

Glass and gilt bronze

H: 42 cm – 16 1/2 inches ♦ W: 32,5 cm – 12 3/4 inches

35.000 euros

Holiday Selection

XVIII



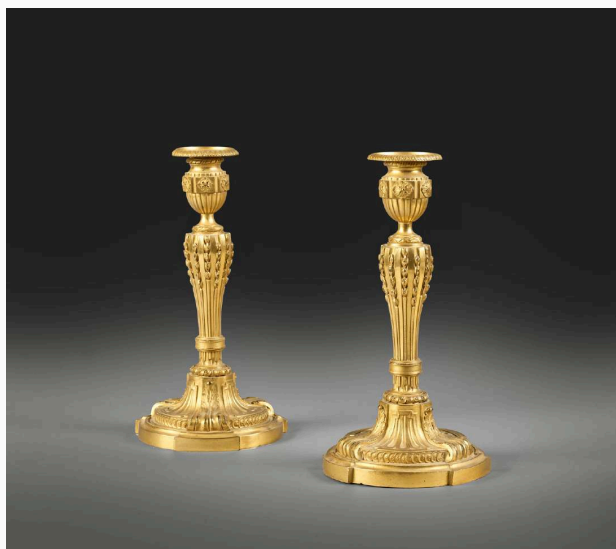
GALERIE LÉAGE
18th-century furniture and objets d'art

Holiday Selection

XVIII



XIX



PAIR OF ORMOLU WHEAT EARS CANDLESTICKS

France, Louis XVI period, circa 1775

Chased and gilt bronze

H: 27cm – 10 2/3 inches • W: 14cm – 5 1/2 inches • D: 14 cm – 5 1/2 inches

26.000 euros

Holiday Selection

XIX



GALERIE LÉAGE
18th-century furniture and objets d'art

Holiday Selection

XIX



XX



POLISHED STEEL, CHASED AND GILT BRONZE
CASKET ENHANCED WITH BRASS AND PEWTER

Russia, Manufacture of Tula, late 18th-early 19th century
Steel, chased and gilt bronze, enhanced with brass and pewter

Provenance :

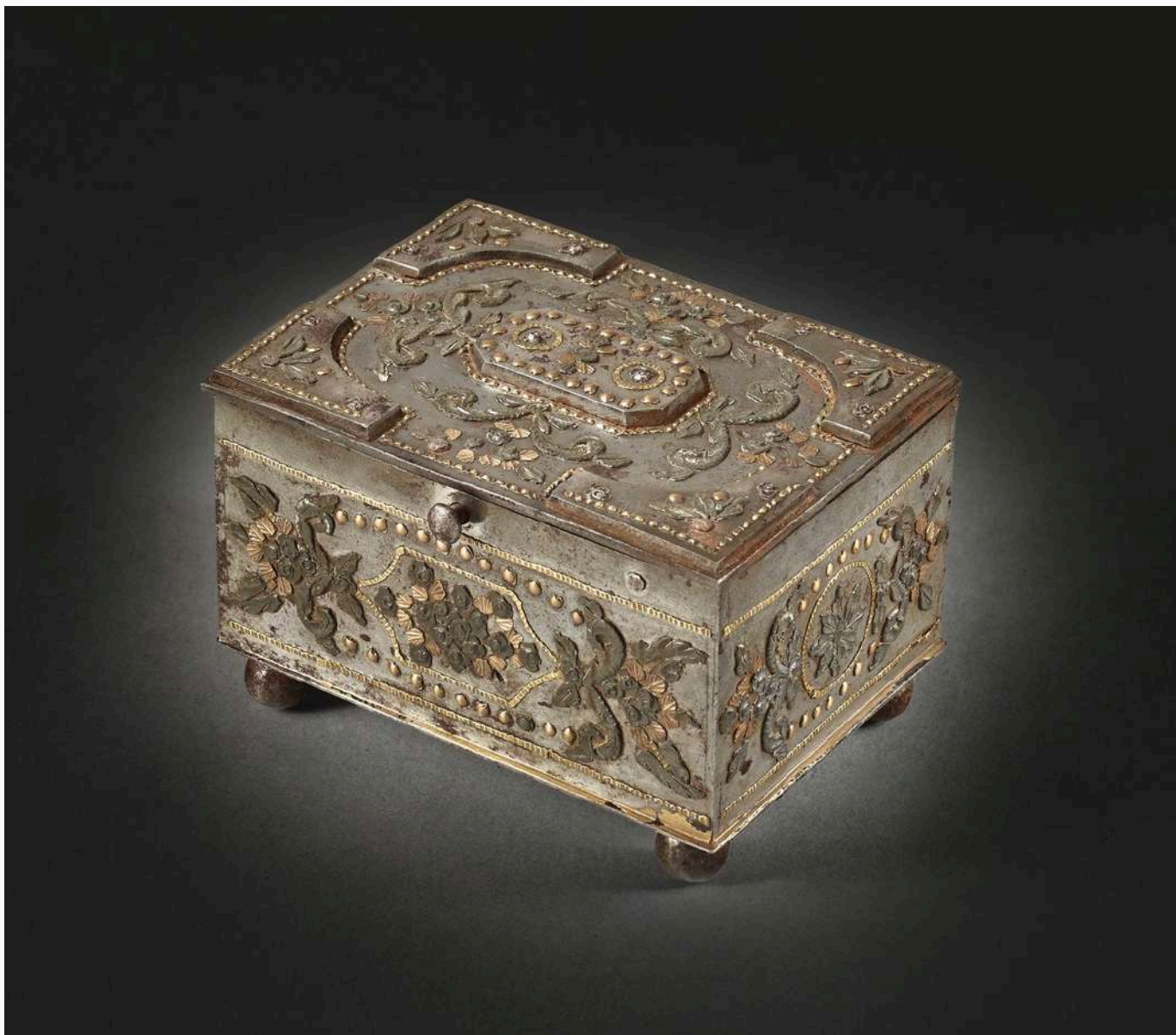
Former Alphonse de Rothschild (1827-1905) collection

H: 6,5 cm – 3 3/4 inches • W: 7,5 cm – 4 1/4 inches • D: 10 cm - 1/2 inches

9.500 euros

Holiday Selection

XX



GALERIE LÉAGE
18th-century furniture and objets d'art

Holiday Selection

XX



GALERIE LÉAGE
18th-century furniture and objets d'art

XXI



PAIR OF BAROQUE MIRRORS

Italy, Rome, late 17th century
After designs by **Filippo Passarini (1638–1698)**
Carved, pierced, and gilded wood

H: 117 cm – 46 1/8 inches • W: 90 cm - 35 1/2 inches • D: 10 cm – 4 inches

85.000 euros

Holiday Selection

XXI



Holiday Selection

XXI



XXII



PAINTING IN COMPIGNÉ DEPICTING THE
OBELISK AT PORT- VENDRES SQUARE

France, last third of the 18th century

Attributed to **Thomas Compigné**

Pewter, gold, gouache

H: 11,5 cm – 4 1/2 inches ♦ W: 11,5 cm – 4 1/2 inches

9.000 euros

Holiday Selection

XXII



GALERIE LÉAGE
18th-century furniture and objets d'art



XXIII



PAIR OF FIREDOGS WITH CHILLY PUTTI

France, Transition period, circa 1760
Attributed to **Philippe Caffieri (1714-1774)**
Chased and gilt bronze

H: 32 cm – 12 1/2 inches • W: 21 cm – 8 inches • D: 13 cm – 5 1/4 inches

28.000 euros

Holiday Selection

XXIII



GALERIE LÉAGE
18th-century furniture and objets d'art

Holiday Selection

XXIII



XXIV



POLISHED STEEL MONEYBOX, CHASED AND GILT BRONZE,
ENHANCED WITH BRASS AND PEWTER

Russia, end of the 18th century – beginning of the 19th century

Tula manufactory

Inscription of the goldsmith SVECHNIKOV IN TULA

Steel, chased and gilt bronze, enhanced with brass and pewter

Provenance :

Former Alphonse de Rothschild collection (1827-1927)

H: 7 cm – 8 1/2 inches • W: 6,5 cm – 4 1/8 inches • D: 6,5 cm – 1 1/8 inches

9.000 euros

Holiday Selection

XXIV



GALERIE LÉAGE
18th-century furniture and objets d'art

Holiday Selection

XXIV



GALERIE LÉAGE

18th century furniture and objets d'art

178 rue du faubourg Saint-Honoré, 75008 Paris

+33 (0)1.45.63.43.46

contact@galerieleage.com

www.galerieleage.com